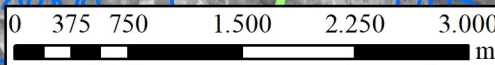


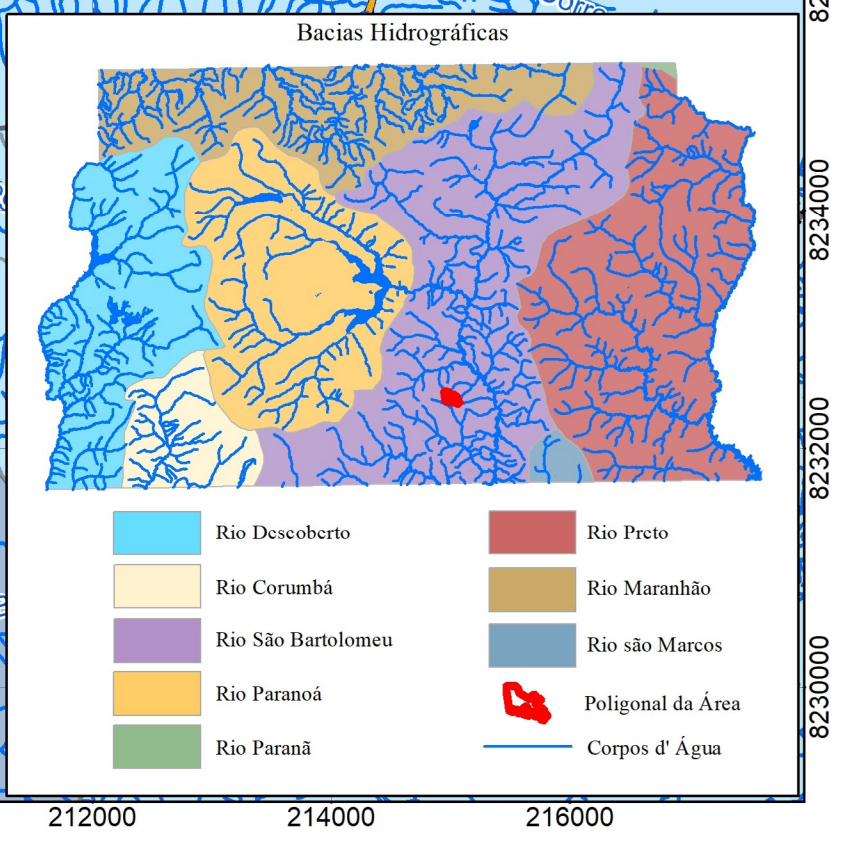
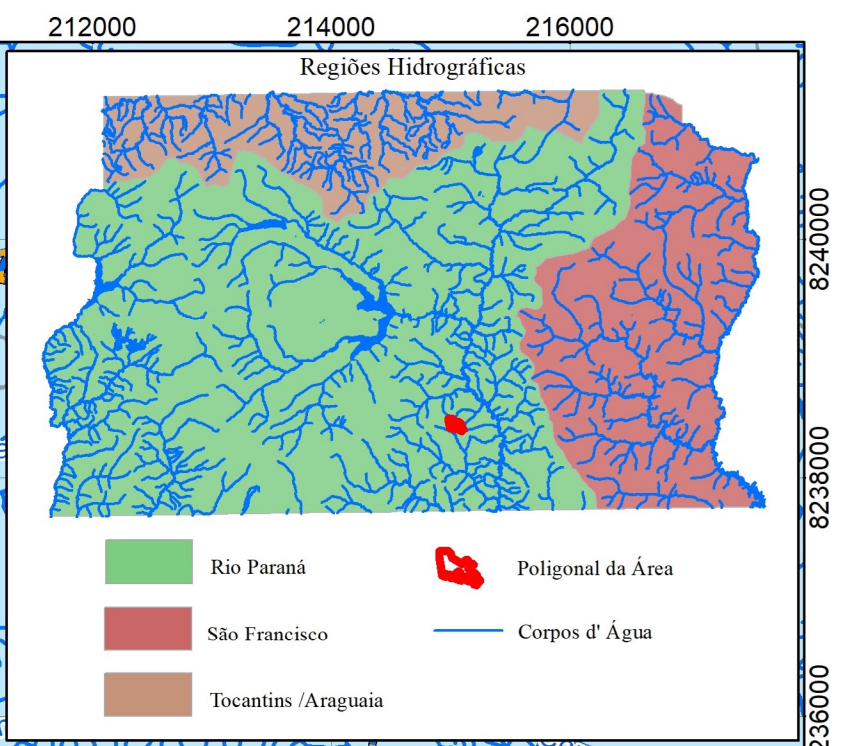
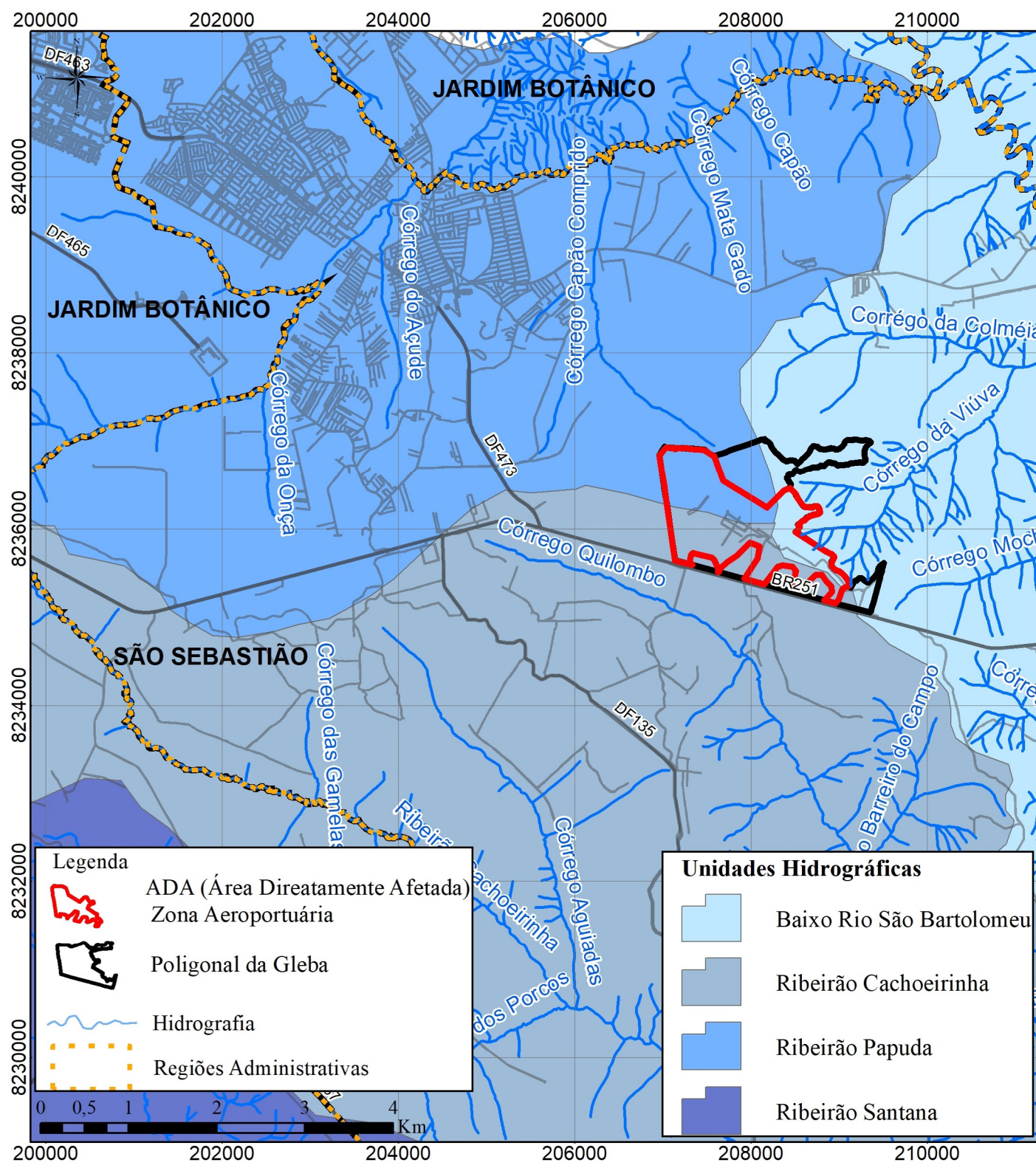
Legenda

- ADA (Zona Aeroportuária)
- Poligonal da Gleba
- Base SICAD
- Hidrografia

Qualidade da Água

- 1
- 2
- 3
- 4





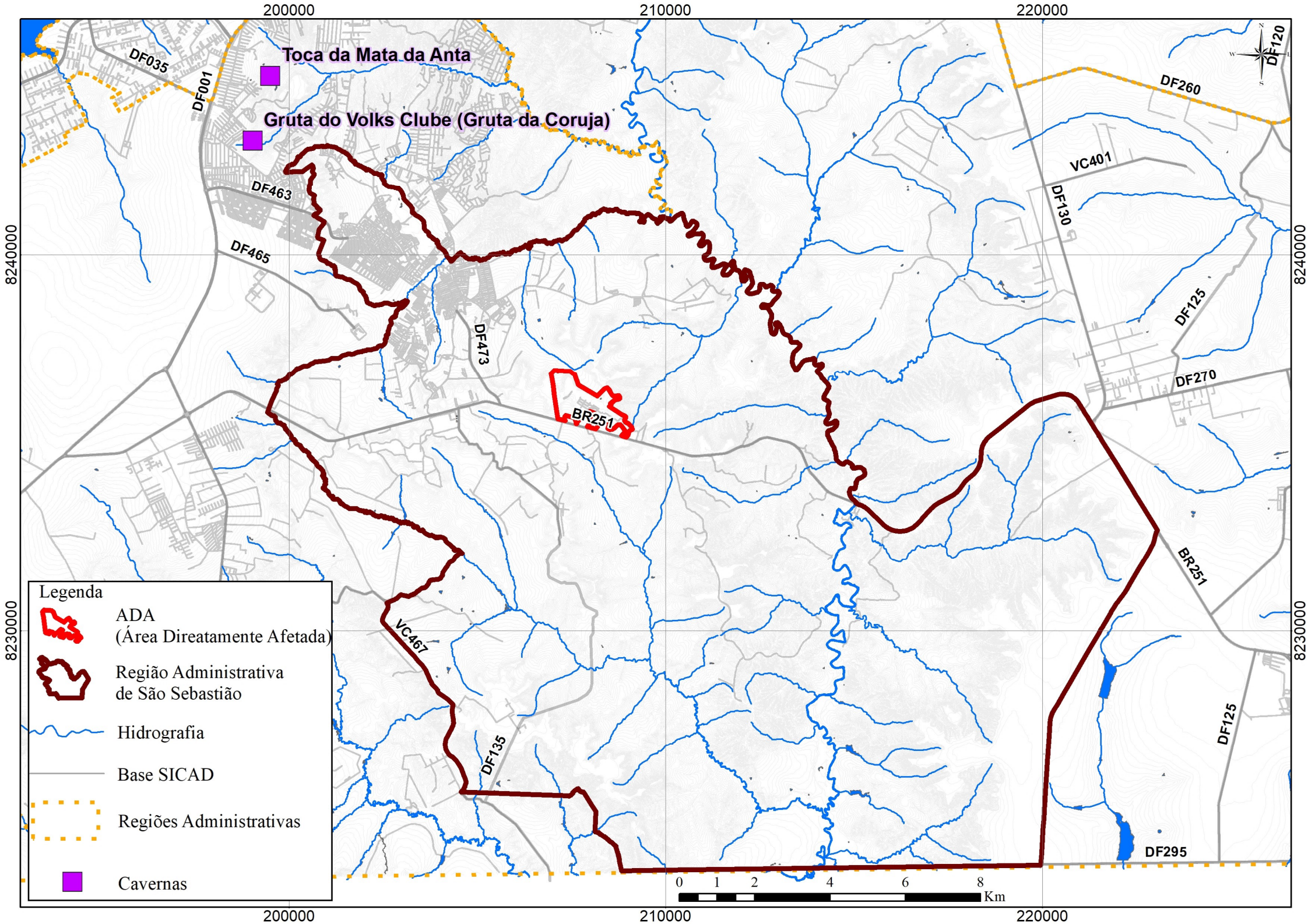
Legenda

- ADA (Área Diretamente Afetada)
- Zona Aeroportuária
- Poligonal da Gleba
- Hidrografia
- Regiões Administrativas

Unidades Hidrográficas

- Baixo Rio São Bartolomeu
- Ribeirão Cachoeirinha
- Ribeirão Papuda
- Ribeirão Santana





Toca da Mata da Anta

Gruta do Volks Clube (Gruta da Coruja)

DF035

DF001

DF463

DF465

DF473

BR251

DF260

VC401

DF130

DF125

DF270

BR251

VC467

DF135

DF125

DF295

0 1 2 4 6 8 Km

200000

210000

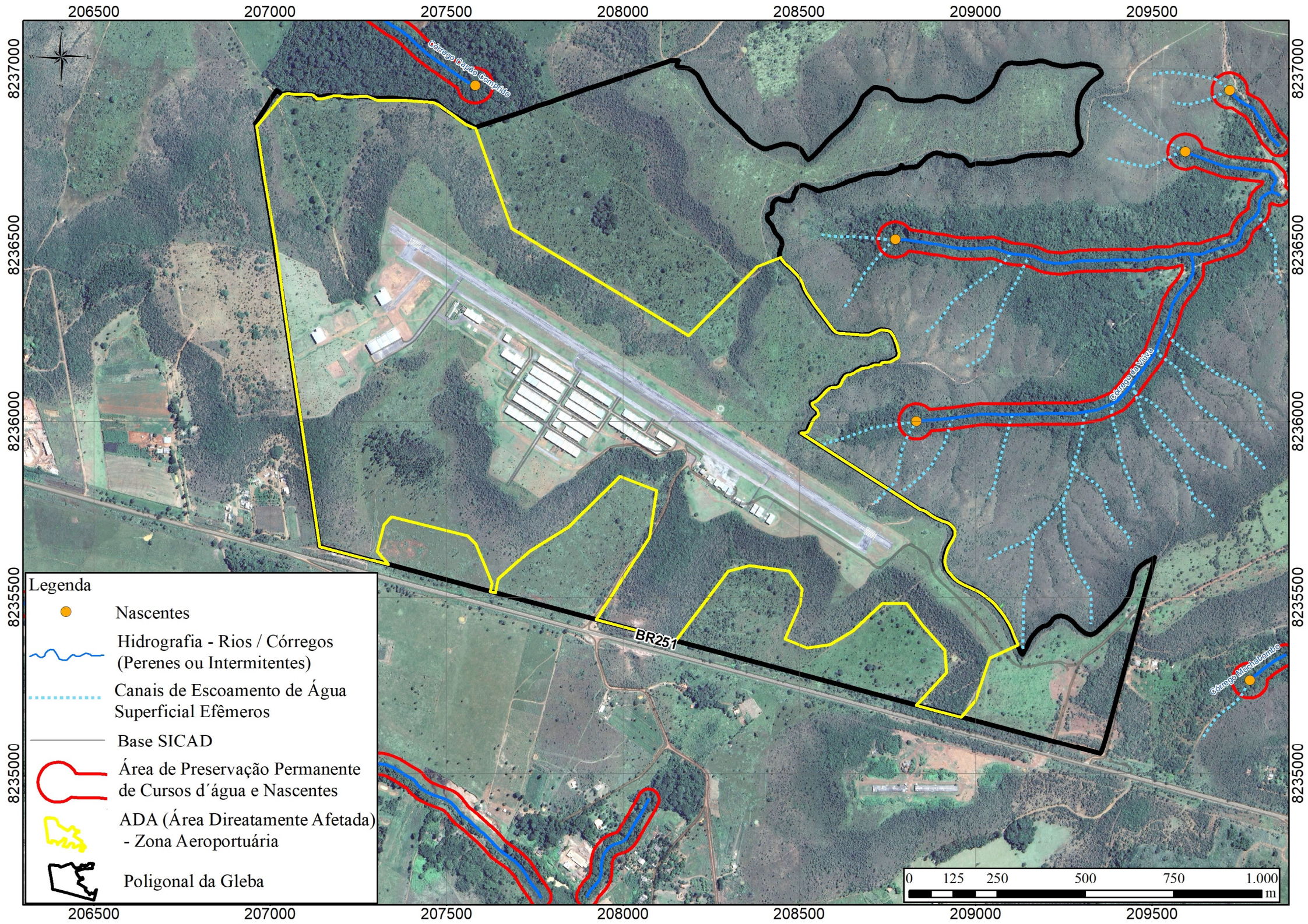
220000

8240000

8240000

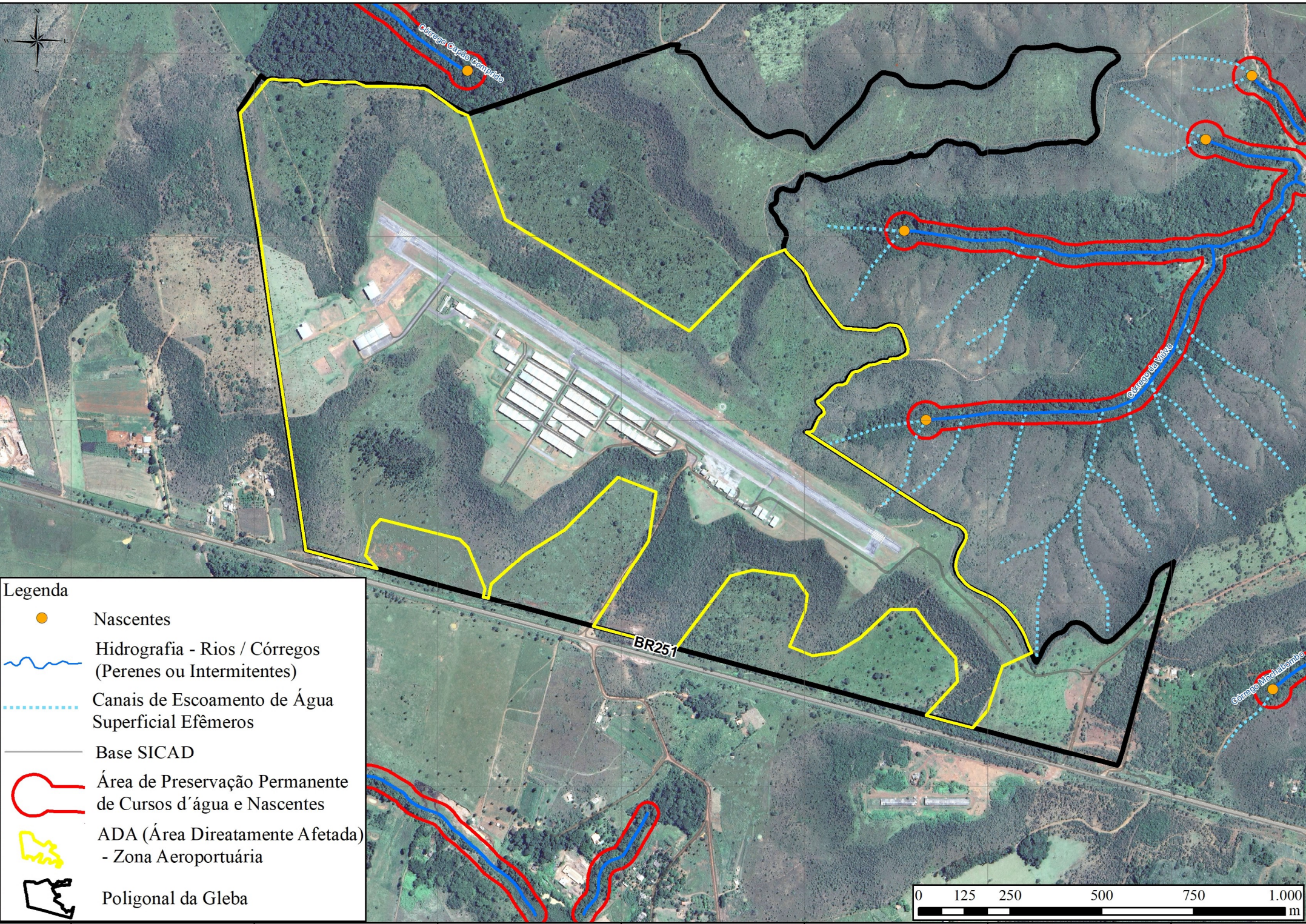
8230000

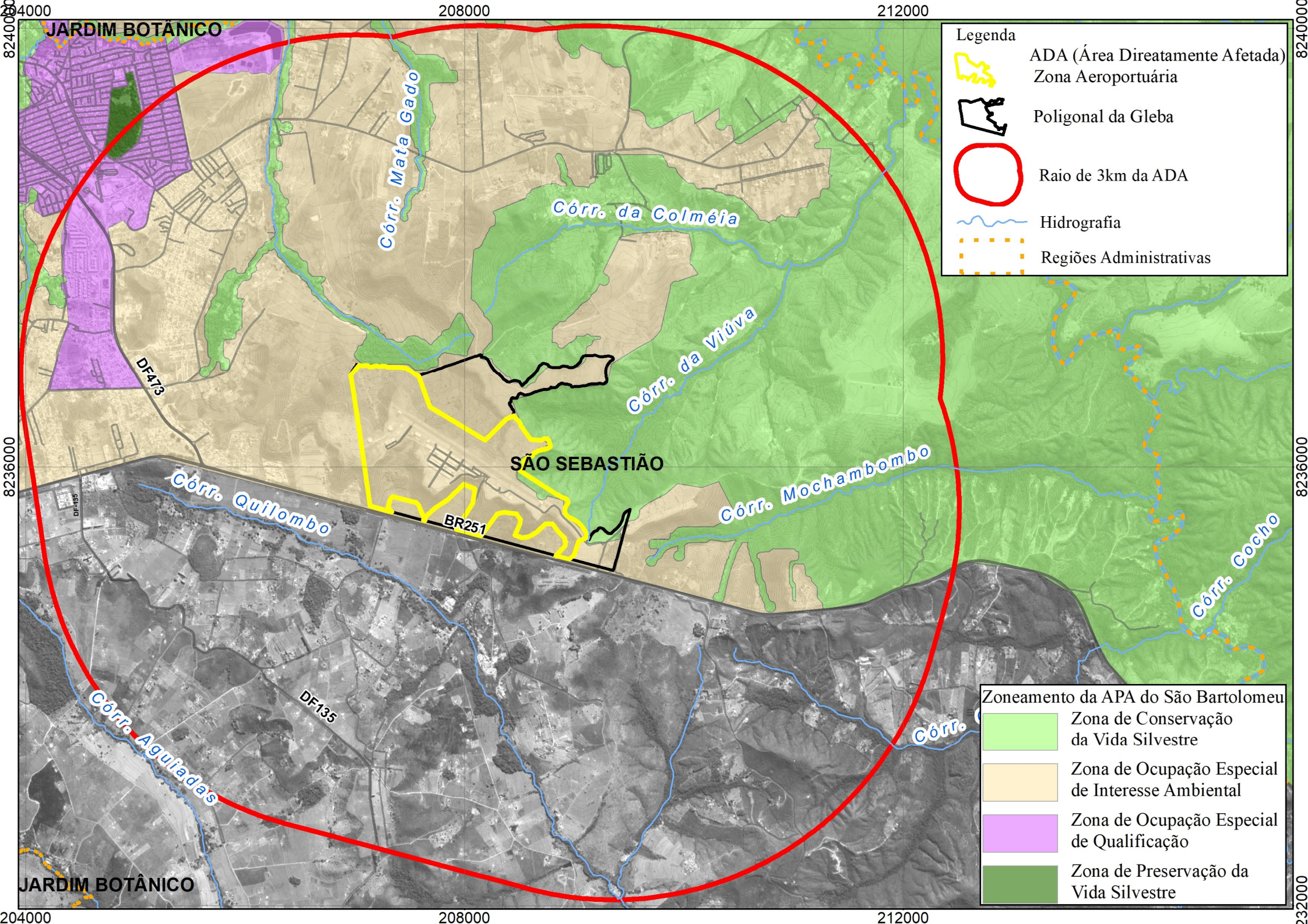
8230000









Legenda

- Nascentes
- Hidrografia - Rios / Córregos (Perenes ou Intermitentes)
- Canais de Escoamento de Água Superficial Efêmeros
- Base SICAD
- Área de Preservação Permanente de Cursos d'água e Nascentes
- ADA (Área Diretamente Afetada) - Zona Aeroportuária
- Poligonal da Gleba

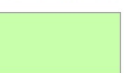





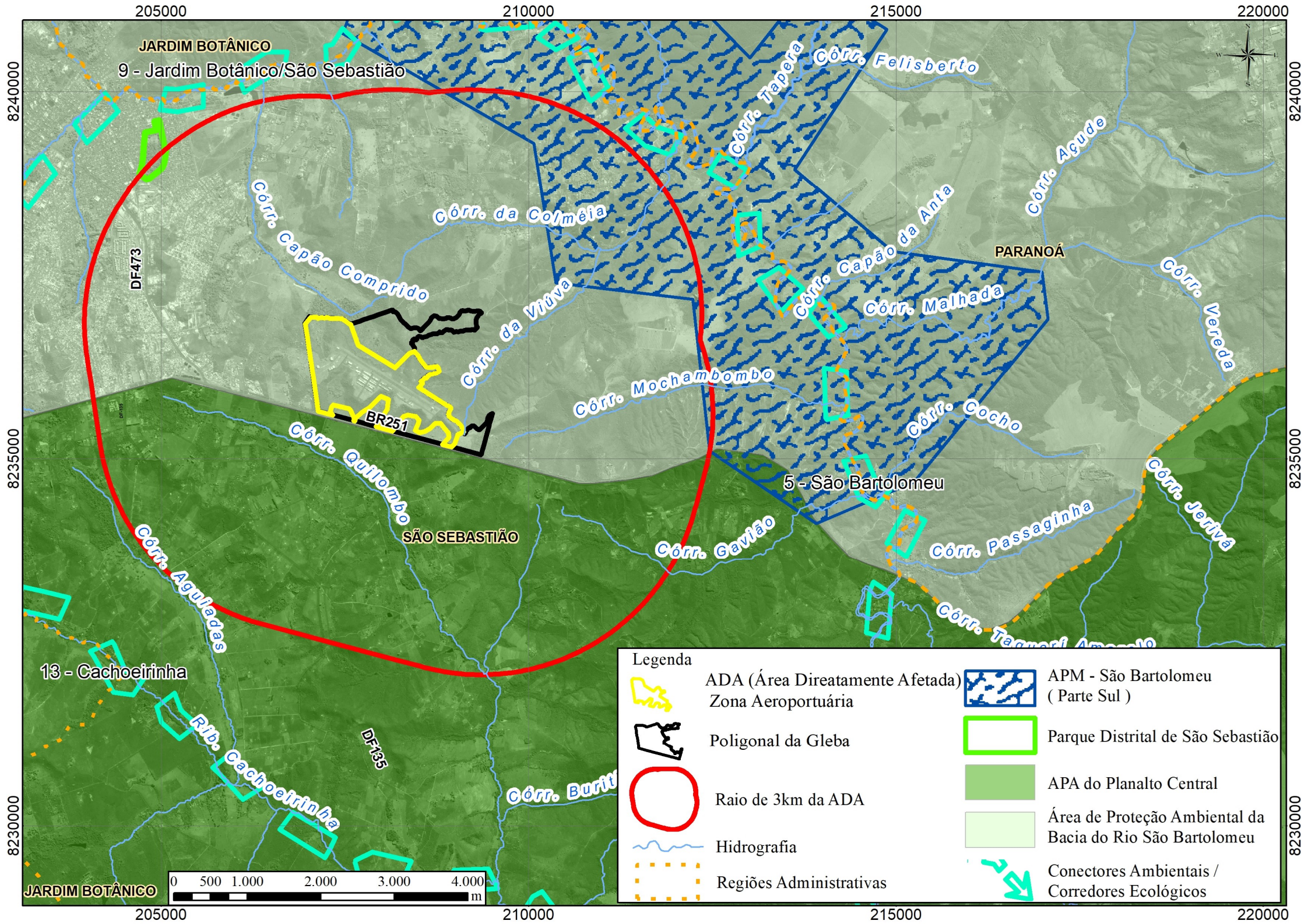


Legenda

-  ADA (Área Diretamente Afetada)
-  Zona Aeroportuária
-  Poligonal da Gleba
-  Raio de 3km da ADA
-  Hidrografia
-  Regiões Administrativas

Zoneamento da APA do São Bartolomeu

-  Zona de Conservação da Vida Silvestre
-  Zona de Ocupação Especial de Interesse Ambiental
-  Zona de Ocupação Especial de Qualificação
-  Zona de Preservação da Vida Silvestre







207000

208000




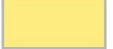


209000



Legenda

-  Estradas e Rodovias - DER
-  Trajeto de Campo
-  Curva de Nível
-  Zona Aeroportuária

Declividade

-  0 - 3 %
-  3 - 8 %
-  8 - 20 %
-  20 - 45 %
-  45 - 75 %
-  > 75 %

8236000

8236000

207000

208000

209000

